

MARCOTHERM ELEMENTO DI FISSAGGIO INTERNO SPALLETTA Tra-Wik-PH

MARCOTHERM INTERNAL JAM FIXING ELEMENT Tra-Wik-PH

Code EFINTSPxx

DESCRIPTION



MTH ELEMENTO DI FISSAGGIO INTERNO SPALLETTA Tra-Wik-PH is made of black coloured rigid polyurethane foam that is not subject to decay. It is reinforced with two phenolic resin plates immersed in the foam.

DIMENSIONS		MECHANICAL FIXING	
Types:	80- 300 mm	Screws:	Fischer FUR 8x100T
Bonding surface:	280 x 112 mm	Perforation diameter:	8 mm
Phenolic resin plate:	104 x 65 mm	Min. perforation depth:	86 mm
Useful surface:	84 x 45 mm	Min. anchoring depth:	70 mm
PU specific gravity:	200 kg/m ³	Tool connection:	Torx T30

APPLICATION

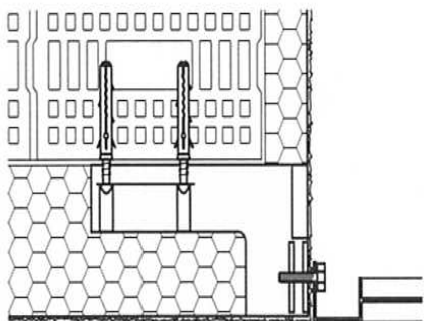
The MTH ELEMENTO DI FISSAGGIO INTERNO SPALLETTA Tra-Wik-PH internal jam fixing element is especially suited for medium weight external elements, without heat bridge, in Thermal Insulation Composite Systems made of expanded polystyrene (EPS) or mineral wool (MW).

It can be covered with commercially available plasters and thin-set mortars without any preparation.

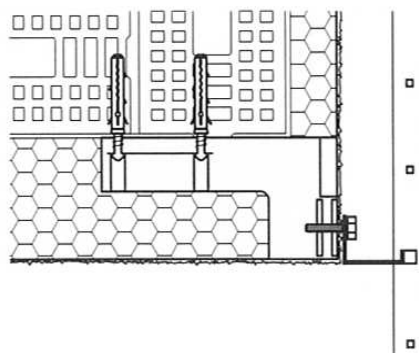
The MTH ELEMENTO DI FISSAGGIO INTERNO SPALLETTA Tra-Wik-PH internal jam fixing element has a limited resistance to UV rays; protection for the duration of the construction is however not fundamental.

The mounting of external elements without thermal bridge is allowed, for example, in parapets.

Parapets placed between window and door soffits (French balconies)



Mounting of parapets in the corners of buildings



Colorificio San Marco Spa – Via Alta 10 – 30020 Marcon (VE), Italy – Tel +39 041 4569322 – Fax +39 041 5950153 – info@san-marco.it

**san
marco**
SISTEMI VERNICIANTI PER L'EDILIZIA

MARCOTHERM ELEMENTO DI FISSAGGIO INTERNO

SPALLETTA Tra-Wik-PH

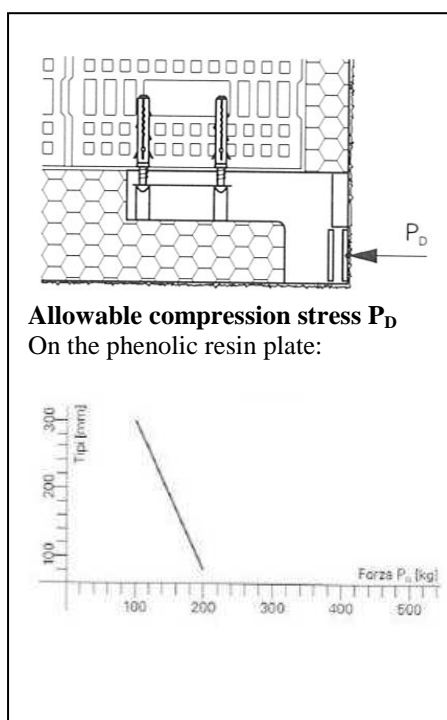
MARCOTHERM INTERNAL JAM FIXING ELEMENT Tra-Wik-PH

Code EFINTSPxx

TECHICAL INFORMATION

Thermal conductivity certificate of the PU: λ 0.04 W/mK
 DIN 4102, May 1998: Class B2 fire rating
 Tensile strength requirements of the adhesive by the base
 according to SIA: 0.25 N/mm² 2.5 kg/cm²

The adhesive tensile strength of the base must be
 determined by performing certain tests.
 The entire surface must be glued.



Colorificio San Marco Spa – Via Alta 10 – 30020 Marcon (VE), Italy – Tel +39 041 4569322 – Fax +39 041 5950153 – info@san-marco.it

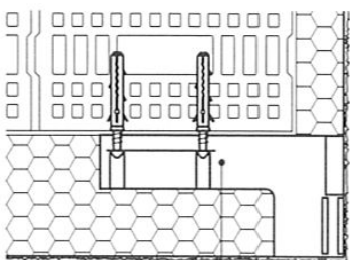
san marco
 SISTEMI VERNICIANTI PER L'EDILIZIA

MARCOTHERM ELEMENTO DI FISSAGGIO INTERNO

SPALLETTA Tra-Wik-PH

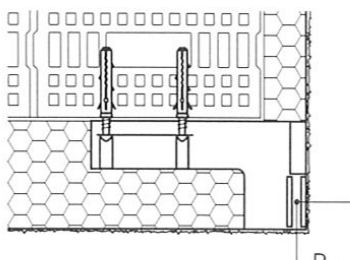
MARCOTHERM INTERNAL JAM FIXING ELEMENT Tra-Wik-PH

Code EFINTSPxx

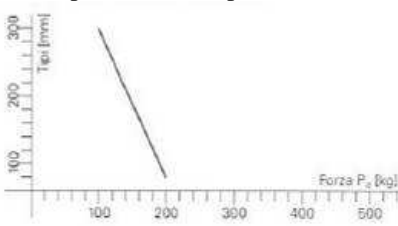


Allowable tensile stress P_z
On the anchoring of

Masonry:	3.8 kN
Stress per screw:	0.4 kN
Bonding force:	2.6 kN
Concrete:	4.1 kN
Stress per screw:	0.5 kN
Bonding force:	2.6 kN

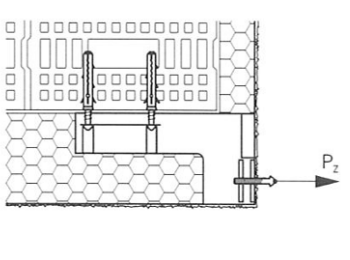


Allowable tensile stress P_{z1}
On the phenolic resin plate:



Allowable tensile stress P_{z2}
On the phenolic resin plate: 2.2 kN

A value of 25 kg/5 cm for the reinforcing fabric was considered in the values seen above.



Allowable tensile stress P_z
on the fastening screws/bolts

Stress for M6 screws:	1.0 kN
Stress for M8 screws:	1.4 kN
Stress for M10 screws:	1.8 kN

MOUNTING

It is recommended that MTH ELEMENTO DI FISSAGGIO INTERNO SPALLETTA Tra-Wik-PH be installed at the same time the insulation panels are glued.

Apply adhesive mortar to the bonding surface of the jamb.
The entire surface of the element's base must be completely covered. The consumption rate is 0.23 kg for one 25 mm thick layer.



Press the MTH ELEMENTO DI FISSAGGIO INTERNO SPALLETTA Tra-Wik-PH internal jamb into the milled section of the insulation panel until it is flush.



Colorificio San Marco Spa – Via Alta 10 – 30020 Marcon (VE), Italy – Tel +39 041 4569322 – Fax +39 041 5950153 – info@san-marco.it

san marco
SISTEMI VERNICIANTI PER L'EDILIZIA

MARCOTHERM ELEMENTO DI FISSAGGIO INTERNO

SPALLETTA Tra-Wik-PH

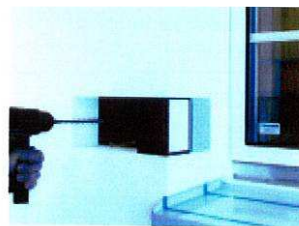
MARCOTHERM INTERNAL JAM FIXING ELEMENT Tra-Wik-PH

Code EFINTSPxx

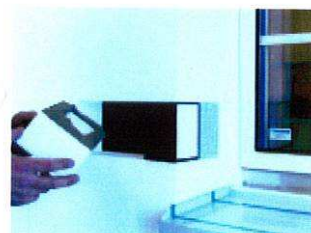
Once the adhesive mortar has hardened, apply the mechanical fixing screws.

Check that the supplied fixing screws for the base are appropriate. If not, they should be replaced with more suitable fixing screws.

Do not use the drill's limit stop when drilling in hollow block.



Cover the heads of the fixing screws with insulating material covered with adhesive mortar and press until flush with the rest of the insulating material.



FINISHING WORK

Cover the fixing element with External Thermal Insulation Composite System.

Determine the exact position of the element by tapping on the plaster coat.

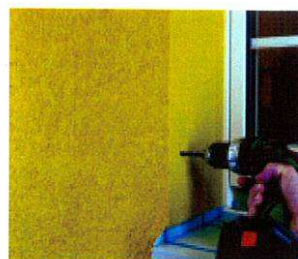
Fasten using only self-threading or metric screws.

Wood and self-tapping screws are not recommended.

Make a starter hole for metric screws:

M6	hole diameter	5.0 mm
M8	hole diameter	6.5 mm
M10	hole diameter	8.2 mm

Screw the object to be mounted in the MTH ELEMENTO DI FISSAGGIO INTERNO SPALLETTA Tra-Wik-PH internal jamb. The screw depth into the bracket must be at least 26 mm. This ensures that the entire thickness of the phenolic resin plate is fastened correctly.



COLORIFICIO SAN MARCO guarantees that the information hereupon is provided to the best of its technical and scientific knowledge and based on its experience; nonetheless, the company may not be held liable for the results obtained using these products, as application conditions are beyond its control. It is recommended to always make sure that the product is suited to each specific instance. The present sheet voids and replaces any previously existing sheets. For further technical information contact technical service at +39 0414569322.

Colorificio San Marco Spa – Via Alta 10 – 30020 Marcon (VE), Italy – Tel +39 041 4569322 – Fax +39 041 5950153 – info@san-marco.it

san marco
SISTEMI VERNICIANTI PER L'EDILIZIA